

# FITTING INSTRUCTIONS

(AIRBAG OPERATING HEIGHT & MAXIMUM PRESSURE)

## RR4718



**⚠** This air suspension system is designed to assist the original vehicle manufacturer's suspension – it is not meant to carry the entire rated load. We do not recommend that leaves be removed, or other changes be made from the OEM suspension unless an applicable commercially available suspension kit is fitted.

**⚠** The kit is designed to suit a standard vehicle configuration – modifications to the vehicle outside the kit design parameters may adversely affect fitment and operation such as:

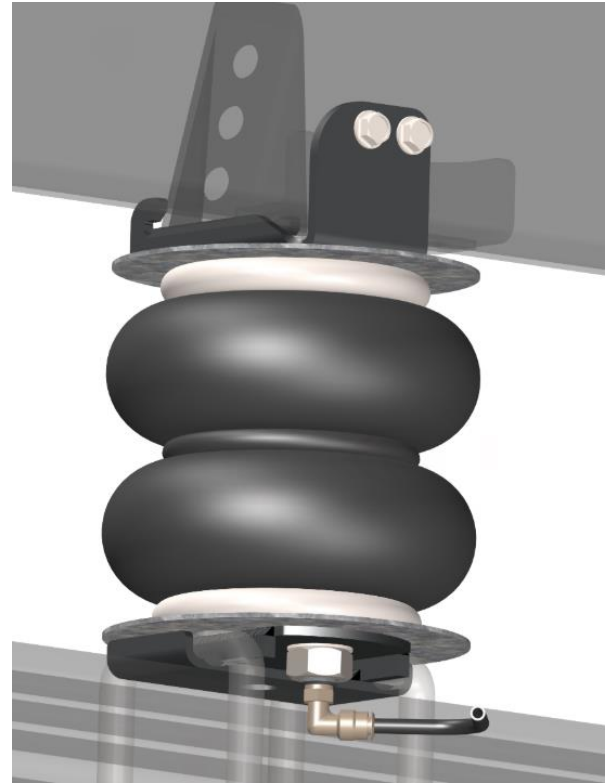
- Height changes outside any noted in the kit specification.
- Larger dampers (Shock Absorbers)
- Wheel and tyre changes
- Exhaust changes.

**⚠** If your vehicle is fitted with a brake proportioning valve or stability control system it is important to ensure this is maintained and adjusted according to the vehicle manufacturer's instructions.

**⚠** It is recommended that only a properly qualified person installs the product and carries out maintenance. If you are not qualified and attempt to carry out such work ensure that all safety equipment is used and safety standards are met.

**⚠** Ensure that you have read the full Product Manual before attempting to fit the product.

**⚠** Ensure the Product Manual is kept with the vehicle and that any vehicle owner and/or operator is fully advised on the system and its operation before attempting to drive or operate it.



**SEE OTHER WARNINGS AND IMPORTANT INFORMATION IN THE PRODUCT MANUAL**

**LHS = LEFT SIDE OF THE VEHICLE WHEN FACING FORWARD**

### STEP 1 - PREPARE THE VEHICLE

In order to fit this kit the u-bolts may need to be loosened or removed. Ensure this operation is carried out according to the vehicle manufacturers' instructions.

### STEP 2 - AIRLINE TUBING & FITTINGS - GENERAL NOTES

#### CUTTING

Only cut the airline tubing with a sharp blade making the cut as square as possible.

Always trim the tubing before re-inserting into the fitting.

**⚠** If you use a sharp utility knife or razor blade great care must be taken in all cases not to cut yourself during this operation.

#### CONNECTING & REMOVING

##### To connect:

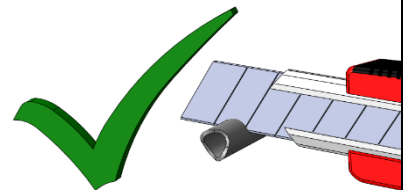
Push the freshly trimmed tubing into the fitting as far as possible.

##### To remove:

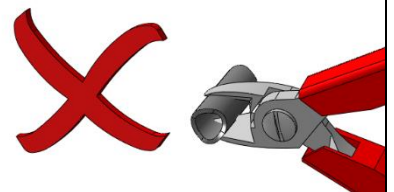
First release the air pressure from the system. To withdraw the tubing, push and hold the collar on the fitting away from the tube and pull out the tubing.

**Hint** In confined spaces an open ended spanner can be used to evenly depress the collar and remove the airline tubing.

**CUT TUBING  
SQUARE WITH  
SHARP BLADE  
OR TUBE  
CUTTER**



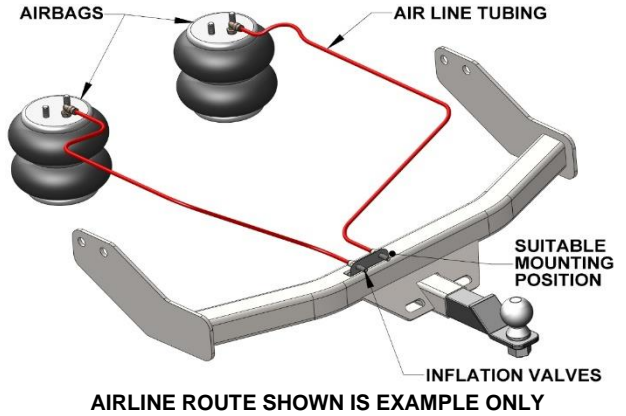
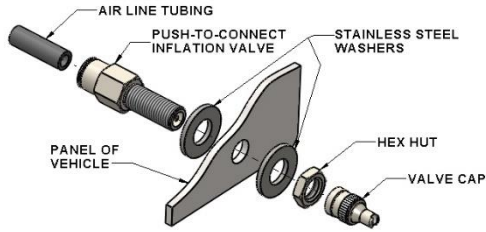
**DO NOT USE  
PLIERS, SIDE  
CUTTERS OR  
PIPE CUTTERS**



### STEP 3 - POSITION YOUR INFLATION VALVES

Select a convenient location for the air inflation valves such as the bumper or the body of the vehicle. It must be protected from road damage and be accessible for air inflation equipment.

Drill a 5/16" hole and install the air inflation valve using two 5/16" stainless steel washers as supports where required.



### STEP 4 - PREPARE THE AIR LINE TUBING

The air line is supplied with split protector tube pre-fitted to shield the air line during and after installation. Decide on a suitable route for the air line from the airbag to the inflation valve location to avoid direct heat from engine, exhaust pipe, and away from sharp edges.

Uncoil the air line tubing being careful not to fold or kink it and cut to length to suit the chosen route. Once routed, the protector tube is pulled back later to prepare the protected air line.

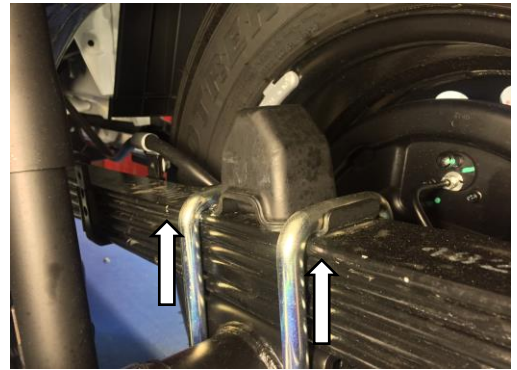
**DO NOT CONNECT OR SECURE THE AIR LINE AT THIS POINT**



### STEP 5 - REMOVE BUMP STOP

Loosen the rear axle u-bolts enough to remove the bump stop from the leaf pack.

**NOTE-** The u-bolts are re used to fit the lower bracket.

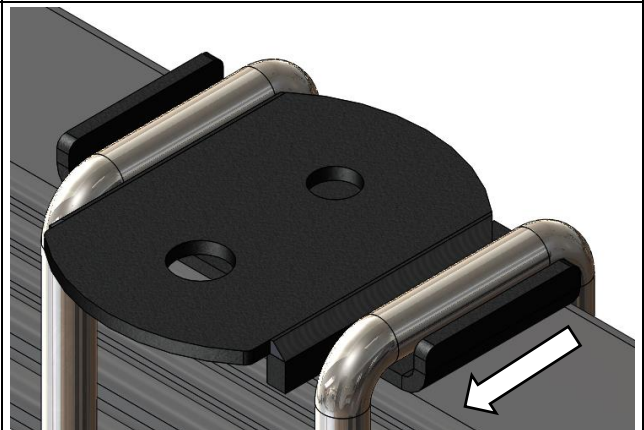


### STEP 6 - FIT THE LOWER BRACKET TO THE VEHICLE

Place the u-bolts over the lower bracket.

Ensure that the lower bracket is orientated correctly. The larger hole in the bracket should be facing inboard of the vehicle.

Tighten as per manufacturers recommended torque settings.



**LARGE HOLE INBOARD**

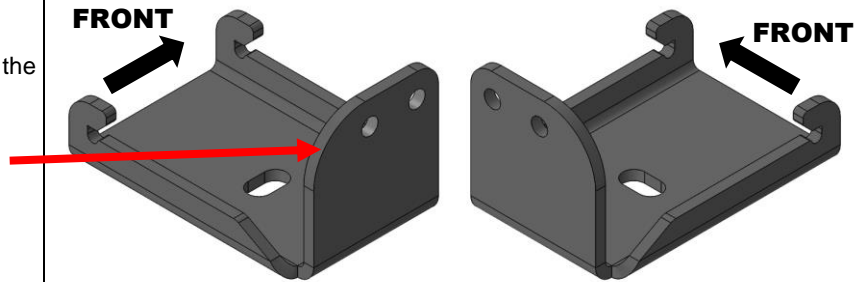
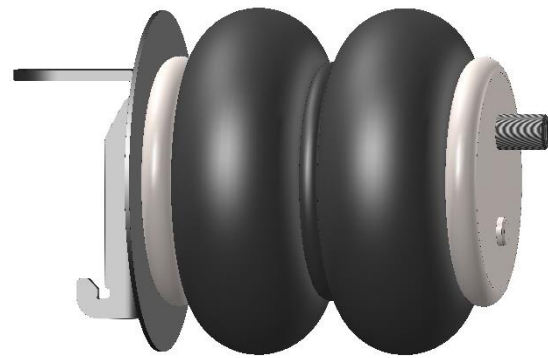
**STEP 7 - ASSEMBLE THE UPPER BRACKET TO THE AIRBAG**

Using 1x Upper bracket, 1x B2326 Crash plate and 1x Airbag fasten the upper bracket to the single central blind nut of the airbag using the supplied 3/8" x 3/4" flange bolt. LHS bracket is B2502 and RHS bracket is B2503, as shown.

Orientate the bracket as shown, with the upturned flange on the upper bracket to the same side as the long combo stud on the bottom of the bag.

On the upturned flange on the upper bracket, the corner with the small curve will face towards the front of the vehicle.

The edge with the large curve will face to the rear of the vehicle.



**B2502-LEFT HAND SIDE**

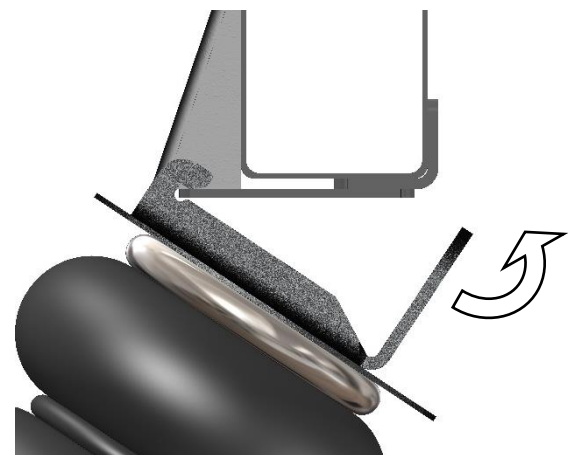
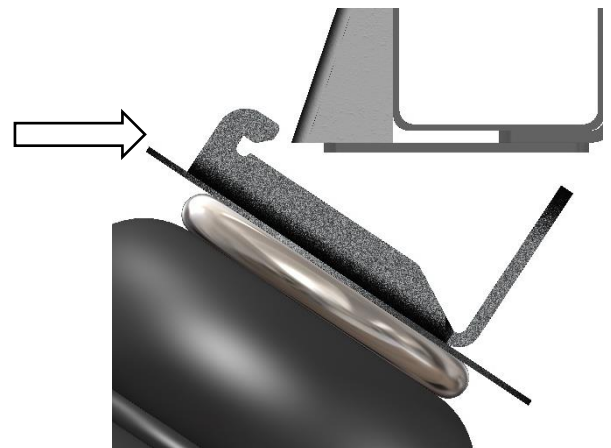
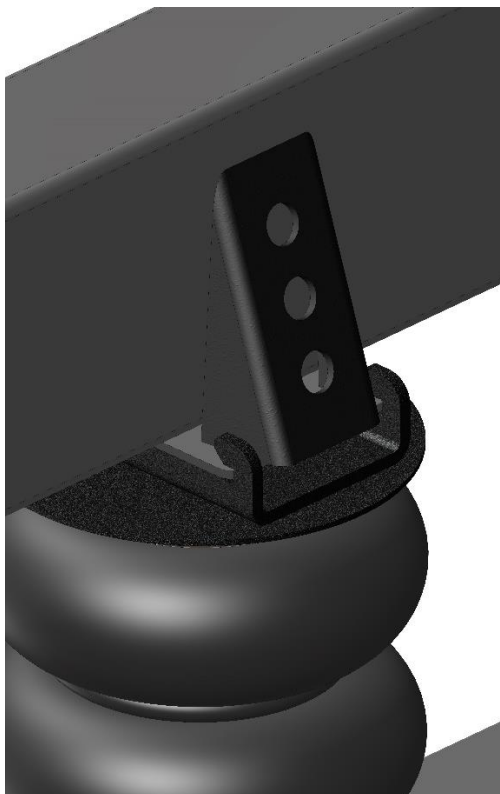
**B2503-RIGHT HAND SIDE**

**STEP 8 - FIT THE AIRBAG ASSEMBLY TO VEHICLE**

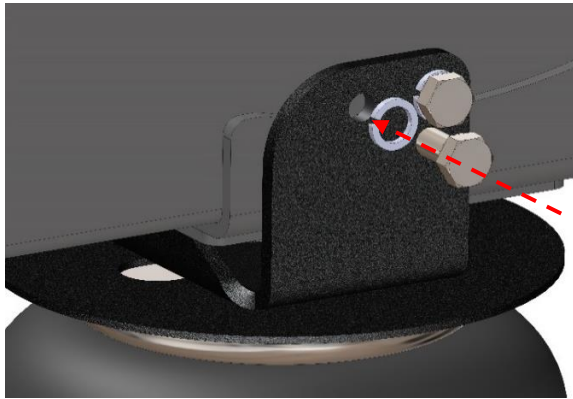
To fit the airbag assembly to the vehicle the upper bracket needs to be 'hooked' onto the outboard side of the bump stop striker plate on the vehicle.

As the brackets are handed, ensure that the correct side is used. **LHS assembly with the B2502 and RHS assembly with B2503**, determined in the previous Step.

Hook the bracket onto either side of the striker plate, as shown:



Once the bracket is hooked onto the vehicle and it is fully wrapped around the bump stop striker plate, finger tighten the supplied 3/8" x 1/2" hex bolts and spring washers into place.

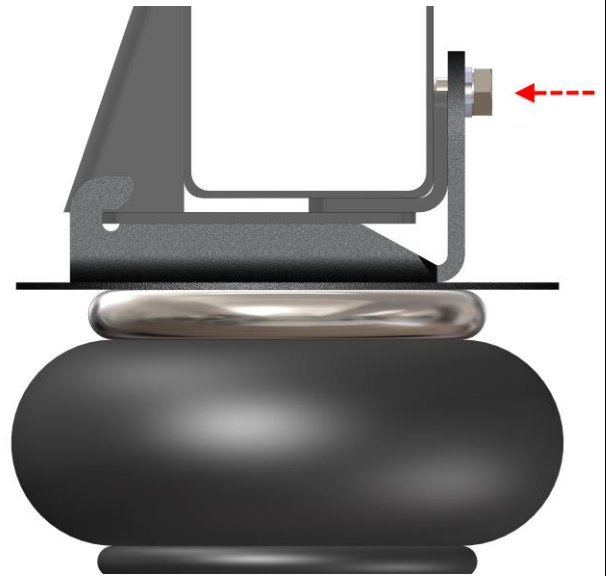


*Left Hand Side shown*

**NOTE:** Before fully tightening, ensure that the Upper bracket seats completely against the bump stop striker.

If required, the complete kit can be installed, fill the airbag to 20 psi to seat the upper bracket correctly and then fully tighten the 3/8" x 1/2" hex bolts and spring washers into place.

Ensure that the two hex bolts sit above the lip of the striker plate to latch onto this lip and **do not** tighten into the striker plate itself.



**STEP 9 - FIT THE AIRBAG ASSEMBLY TO THE LOWER BRACKET**

Fit the airbag with a lower B2326 crash plate and then to the lower bracket by feeding the long 'combo stud' into the inboard hole on the bracket. Ensure that the small stud is also located in the lower bracket hole.

Secure the airbag in place with the 5/8" nut and star washer supplied.

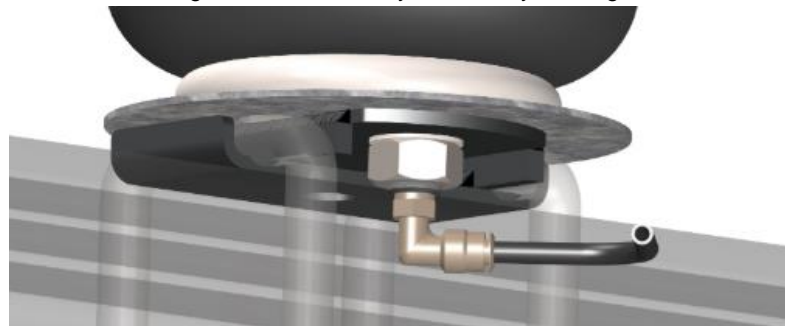
Once the lower bracket is secured to the airbag, tighten the 3/8" x 3/4" Flange Bolt on the top of the airbag to fully secure it to the upper bracket. A 9/16" (M14) spanner will be needed to reach the flange bolt.



**STEP 10 - FIT AIR FITTING TO THE AIRBAG**

Fit the supplied 1/4" x 1/8" straight air fitting in the air entrance hole on the top plate (stud end) of the airbag and tighten until the fitting is snug.

No additional thread sealant needed. If these fittings are re-fitted many times, they will degrade their sealing ability.



**STEP 11 - CONNECT AIRLINE TUBING**

Connect the airline to the air fitting then route the airline tubing up the flexible brake line and up over tray mounts to dodge the spare tyre. Connect to the air inflation valves. Secure with supplied nylon ties.

**STEP 12 - INSTALL OPPOSITE SIDE**

Repeat Steps 5-11 for the opposite side of the vehicle.

### STEP 13 - LEAK TEST

**INFLATE** the airbag to the maximum allowed pressure (see Airbag Operating Height & Maximum Pressure attached) and check for leaks at the connections using soapy water spray. We recommend a soapy water spray solution of 25% soap to 75% water.

**DEFLATE** airbag. If no leaks, continue. If leak detected, check and tighten the airbag fittings (if required), remove the airline tubing, re-cut and re-test.

### STEP 14 - FITMENT COMPLETION

Reattach all suspension components removed earlier and return the vehicle to driving position. Ensure this operation is carried out according to the vehicle manufacturer's instructions.

### STEP 15 - AIRBAG HEIGHT AND ALIGNMENT

The airbag must be checked for the correct installed height, vertical alignment and clearances with the vehicle levelled out.

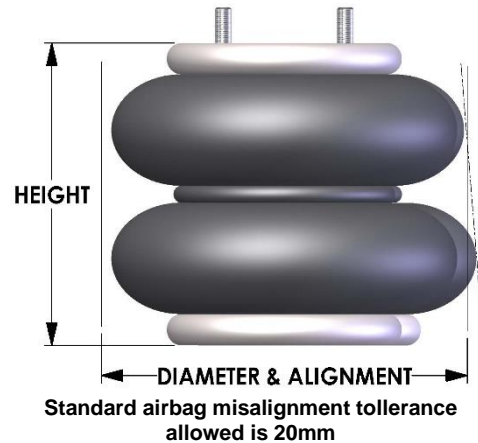
**INFLATE** the airbags until a level vehicle height is reached and measure the bag height between the mounting plates.

The AB0120-1A airbag in this kit requires a height of 6.0" to 7.0" to be maintained under all loads.

It is important to ensure that the airbag does not make contact with any other components in all load and height conditions.

**If the centreline of the airbag end plates are misaligned in any direction more than the amount shown to the right, please contact Airbag Man on 1800 247 224 for further technical support.**

Please note: Misalignment and angled installation at ride height is often required to ensure correct alignment through the suspension travel.



### STEP 16 - TO FINISH

Ensure the **WARNING** label is fixed in a prominent position in sight of the vehicle operator.

Ensure the Product Information Wallet is given to the vehicle owner/operator.

Ensure the vehicle owner/operator fully understands how to use the product.

All fixings should be checked for tightness after the first laden run and thereafter as per the original manufacturer's recommendations.

## **AIRBAG OPERATING HEIGHT & MAXIMUM PRESSURE**

See operating instructions section for proper use and maintain the specific height below:

### **OPERATING HEIGHT**

The AB0120-1A airbag in this kit requires a height of 6.0" to 7.0" under all loads. Adjust and retain pressure up to the stated maximum to maintain the airbag operating height. Failure to do so may result in product or vehicle damage not covered under warranty.

### **MAXIMUM PRESSURE**

**50 PSI (3.5 bar )**

**IF MORE PRESSURE IS REQUIRED TO MAINTAIN THE OPERATING HEIGHT CALL  
AIRBAG MAN ON 1800 247 224 FOR FURTHER TECHNICAL ADVICE**



**FREECALL 1800 247 224**



**⚠️ Incorrect use of this air suspension product can result in damage to the airbag, associated parts and/or the vehicle, which is not covered under warranty.**

**⚠️ Ensure the airbags are maintained at the stated ride height at all times and maintain the minimum pressure required and never exceed the maximum.**